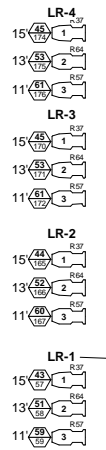
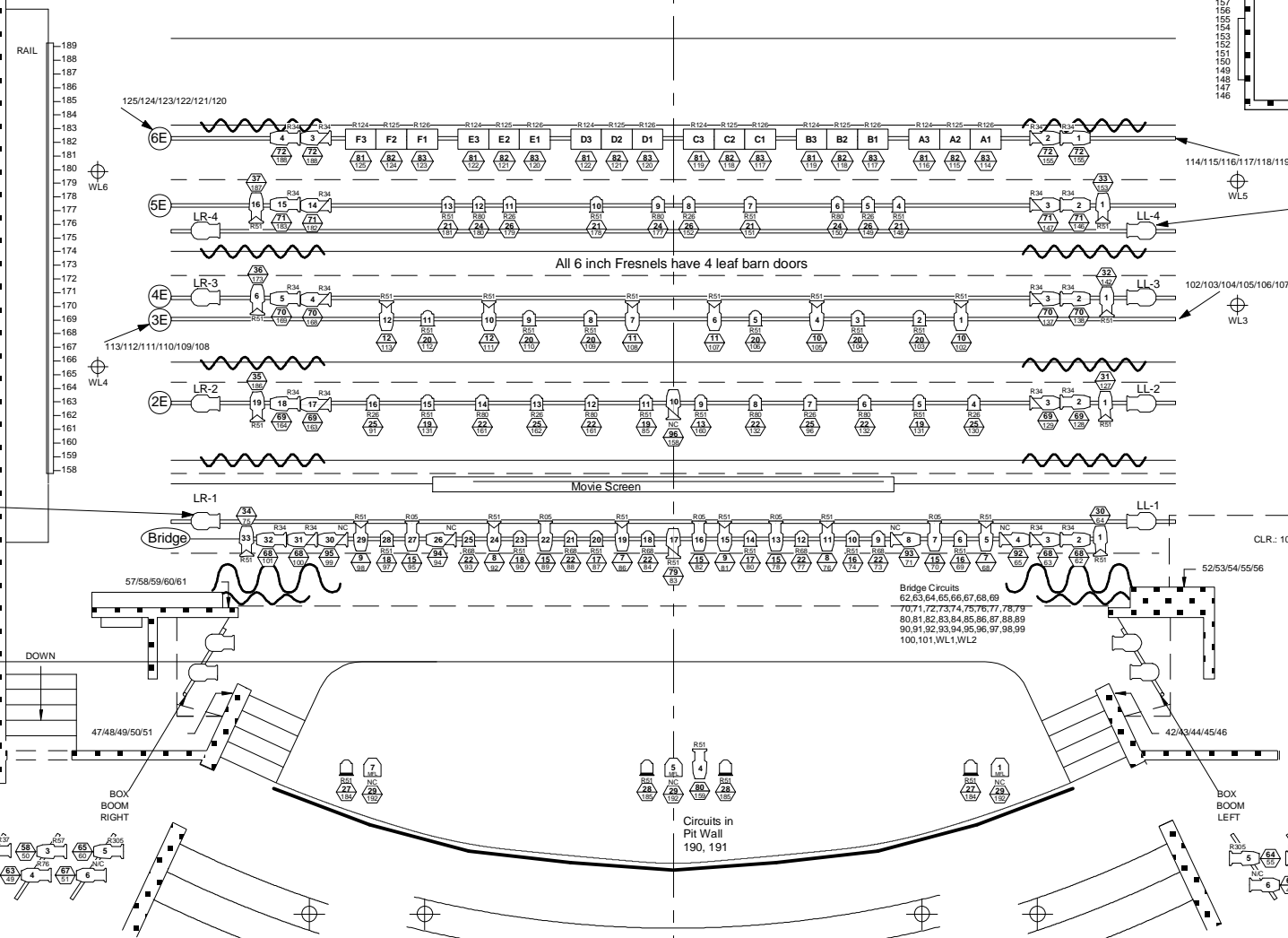
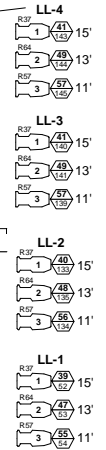


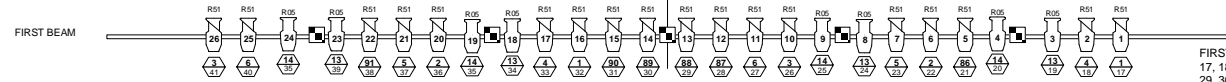
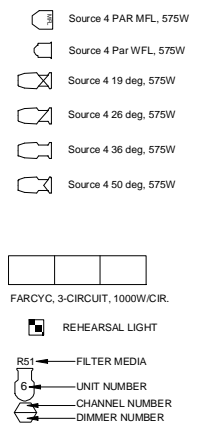
Hanging Ladders SR



Hanging Ladders SL



INSTRUMENT KEY



FIRST BEAM CIRCUITS
17, 18, 19, 20, 21, 22, 23, 24, 25, 26, 27, 28,
29, 30, 31, 32, 33, 34, 35, 36, 37, 38, 39, 40, 41

SECOND BEAM CIRCUITS
5, 6, 7, 8, 9, 10, 11, 12, 13, 14, 15, 16

Worklights

- 1st Electric:**
4 - 1kw Broads
1 between lighting instruments
5&6 / 11&12 / 18&19 / 25&26
- 3rd Electric:**
4 - 1kw Broads
1 between lighting instruments
3&4 / 5&6 / 7&8 / 10&11
- 6th Electric:**
4 - 1kw Broads
1 between lighting instruments
each Far Cyc cluster